



Clifton Mansions, 429 Coldharbour Lane, SW9

3 bedroom flat to let

£620 Per Week

Furnished

Property Details

Located in the heart of Brixton, this period mansion block offers a well-presented three double bedroom flat. The property features an 'L'-shaped open-plan kitchen/reception room, with a galley-style kitchen offering ample storage. Leading off the kitchen is a small private balcony.

The flat further benefits from three spacious double bedrooms and a sleek, modern family-sized bathroom shared between all rooms. Perfectly positioned close to Brixton Village, Pop Brixton, and the iconic Ritzy Cinema, the apartment also enjoys excellent transport links, with Brixton Underground Station just a three-minute walk away, providing access to the Victoria Line straight into the City.

Features

- Conversion Flat
- Balcony
- Around a Three minute walk to Brixton Tube
- Three Bedrooms
- Open plan kitchen/reception
- Bathroom

Council tax band B EPC rating D (55)





3 Bed Flat

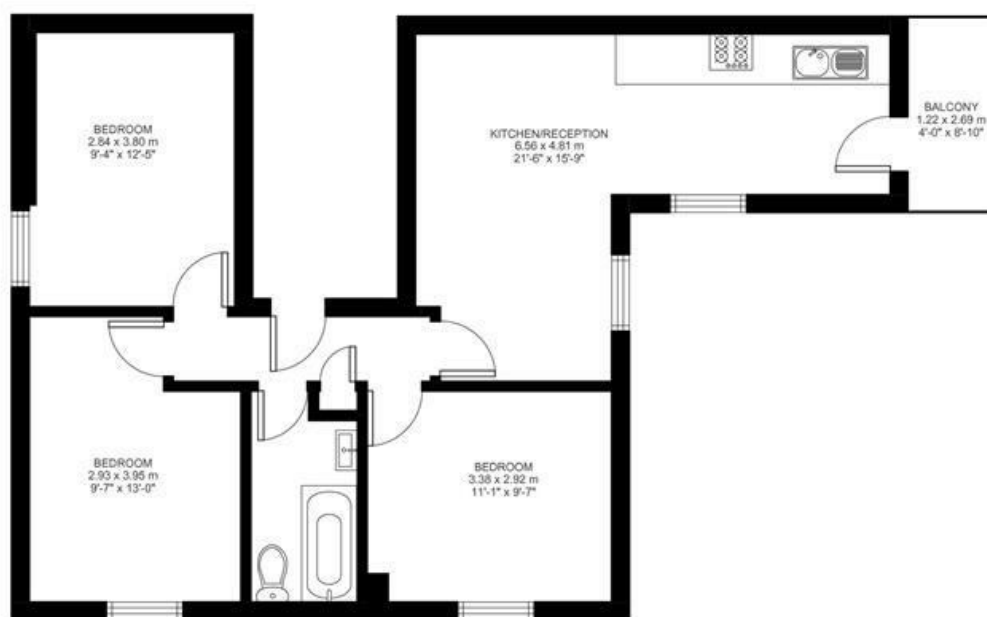
Approx internal area:

675 sqft 63 sqm

While we do try our very best, floor plans are produced as a guide only and we take no responsibility for the precise accuracy with which any property is represented

Coldharbour Lane

Third Floor



Clifton Mansions, 429 Coldharbour Lane, SW9

